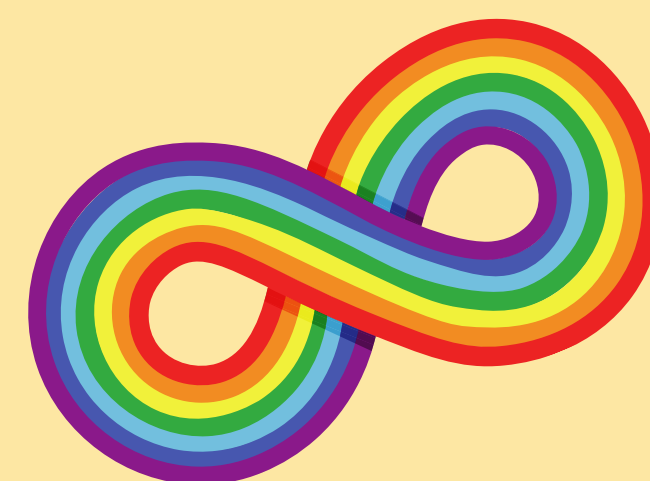


# LOOKING FOR health EDUCATION?



## Now Recruiting:

We are seeking autistic adolescents and young adults (ages 14–22 years) to participate in a research study evaluating a comprehensive health education program.



## Elevatus Curriculum



This program provides developmentally appropriate information on relationships, safety, and sexual health in a supportive environment.

Participants will engage in 22 interactive sessions over 11 weeks. The program will meet twice a week for 90-minutes. We are offering both in-person and virtual options for participation. Please reach out to learn more about our program offerings.

## Why Participate?

- Learn about relationships, consent and personal safety
- Gain essential knowledge in a structured, accessible format
- Contribute to research that improves health education for autistic individuals
- Receive compensation for your time

## For more information or to enroll:

- Contact Elizabeth Schmidt at [elizabeth.schmidt@lmunet.edu](mailto:elizabeth.schmidt@lmunet.edu) or 708-203-1592.

