

# Vaccine Update

January 2021



## Topics for discussion



**Who** can get vaccinated  
**when** (estimated) in NJ?



**Where** can you get  
vaccinated in NJ?



**How** can you get  
vaccinated?



Stakeholder and public engagement

**CONFIDENTIAL**

# Strategic aims of New Jersey's COVID-19 vaccination program (from *New Jersey's vaccination plan Executive Summary*)



Provide equitable access to all who live, work, and/or are educated in New Jersey



Achieve community protection, assuming vaccine effectiveness, availability, and uptake



Build sustainable trust in COVID-19 and other vaccines

**CONFIDENTIAL**

# Updates from ACIP meeting on 12/20/2020 (1/2)

## Prevention of Morbidity & Mortality

---

## Preservation of Societal Functioning

---

**1A**

LTCF Residents

Health Care Personnel

**1B**

Persons 75 Years and Older

Frontline Essential Workers

**1C**

Persons 65-74 years  
Persons 16-64 with high-risk  
medical conditions

Other Essential Workers

- Ensure safety and effectiveness of COVID-19 Vaccines
- Ensure equity in vaccine allocation and distribution

**CONFIDENTIAL**

# Updates from ACIP meeting on 12/20/2020 (2/2)

## Total Essential Workers\* (~87M)

### Frontline Essential Workers (~30M)

---

- First Responders (Firefighters, Police)
- Education (teachers, support staff, daycare)
- Food & Agriculture
- Manufacturing
- Corrections Workers
- U.S. Postal Service Workers
- Public transit workers
- Grocery store workers

### Other Essential Workers (~57M)

---

- Transportation and logistics
- Food service
- Shelter & Housing (construction)
- Finance
- IT & Communication
- Energy Media
- Legal
- Public Safety (Engineers)
- Water & Wastewater

**Frontline Essential Worker:** workers who are in sectors essential to the functioning of society and are at substantially higher risk of exposure to SARS-CoV-2

\* CISA: Essential Critical Infrastructure Workers: <https://www.cisa.gov/news/2020/08/18/cisa-releases-updated-guidance-essential-critical-infrastructure-workers>

**CONFIDENTIAL**

# Preliminary Draft Recommendations of the NJDOH COVID-19 Professional Advisory Committee

Phase 1A	Phase 1B	Phase 1C
<b>Healthcare Personnel =</b> Paid and unpaid persons serving in health care settings who have the potential for direct or indirect exposure to patients or infectious materials	<b>Frontline Essential Workers =</b> <ul style="list-style-type: none"> <li>▪ Agriculture, food production, food distribution (e.g. grocery and restaurant workers)</li> <li>▪ Childcare, child support, and early childhood education</li> <li>▪ Clergy</li> <li>▪ Elder care and support</li> <li>▪ K–12 education (teachers, staff, administrators, etc.)</li> <li>▪ Medical supplies manufacturing and distribution</li> <li>▪ Postal and shipping services</li> <li>▪ Public and other local transportation (e.g. taxis, NJTransit, rideshare, airport, MVC)</li> <li>▪ Public safety (e.g. first responders)</li> <li>▪ Social services support staff (e.g. food pantries, shelter staff)</li> </ul>	<b>Other Essential Workers =</b> <ul style="list-style-type: none"> <li>▪ Building, home services (e.g. plumbers, contractors, and electricians), and real estate</li> <li>▪ Communications systems, media, and press</li> <li>▪ Higher education</li> <li>▪ IT communications providing direct customer service (e.g. servicing internet in homes)</li> <li>▪ Judicial system</li> <li>▪ Laundry services</li> <li>▪ Retail financial services (e.g. banks for check cashing)</li> <li>▪ Sanitation</li> <li>▪ Utilities</li> <li>▪ Warehousing and logistics</li> </ul>
<b>Long-term Care Residents =</b> Adults who reside in facilities that provide a range of services, including medical and personal care, to persons who are unable to live independently	<b>High-risk populations</b> including: <ul style="list-style-type: none"> <li>▪ Persons aged 75 and older</li> <li>▪ Members of tribal communities</li> <li>▪ Persons experiencing homelessness</li> <li>▪ Persons living in shelters</li> </ul>	<b>Other high-risk populations</b> including: <ul style="list-style-type: none"> <li>▪ Persons aged 65–75</li> <li>▪ Persons aged 16–64 with medical conditions that increase risk of severe COVID-19 (<a href="#">CDC definition</a>)</li> <li>▪ Members of multi-generational households (3+ generations)</li> </ul>

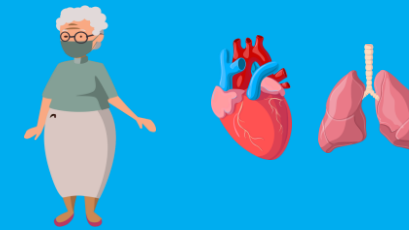
**CONFIDENTIAL**

# Who can get a vaccine in New Jersey and when?

New Jersey's  
current phase as  
of Dec 31 2020

## Phase 1C

*(Final definitions in progress)*



## Phase 2

- General Population



## Phase 1B

Currently vaccination open to:  
Sworn law enforcement and  
Fire professionals



## Phase 1A

- Healthcare workers
- Long-Term Care residents



Now

Spring 2021

Informed by [CDC COVID-19 Vaccination Program Interim Playbook](#) (Sept. 16, 2020), CDC MMWR, [ACIP](#) Prioritization work group considerations

Preliminary, pre-decisional, and deliberative. Based on input provided by State agency leaders and staff, to date, and subject to change. Content is descriptive only and is not meant to constitute legal, clinical, or policy advice.

Source: <https://covid19.nj.gov/faqs/nj-information/slowing-the-spread/where-can-i-get-vaccinated-if-im-a-healthcare-worker-staff-or-resident-of-a-long-term-care-facility-or-other-member-of-phase-1a-or-if-im-a-sworn-law-enforcement-personnel-and-fire-professional-in-phase-1b>

## Topics for discussion



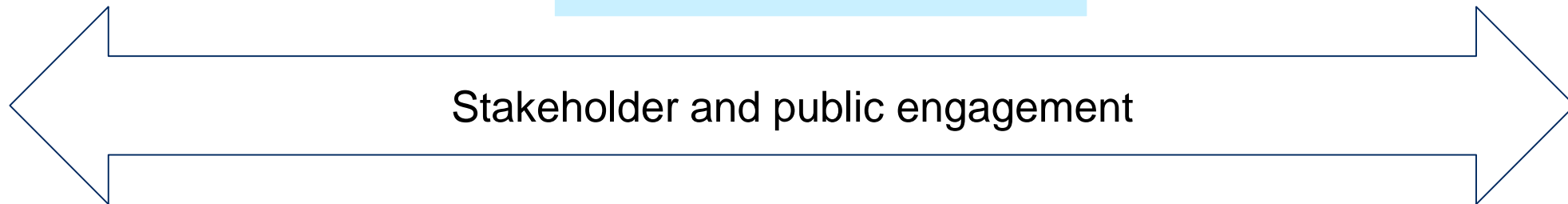
**Who** can get vaccinated  
**when** (estimated) in NJ?



**Where** can you get  
vaccinated in NJ?



**How** can you get  
vaccinated?



# Initial Points of Dispensing sites for COVID-19 vaccination

CONFIDENTIAL



Mega sites



Acute care hospitals



CVS / Walgreens / Others for Federally supported long-term care facilities program



Chain pharmacies



Urgent care centers



Federally Qualified Health Centers



Local Health Departments



**All PODS will need to be equipped to do the following, among others:**

- Register
- Vaccinate
- Bill
- Ensure vaccine stewardship and cold chain management
- Report

# Vaccines are currently available for healthcare workers and other select groups



**Hospital workers  
and volunteers**



**Long-term care  
workers, volunteers,  
and residents**



**All other healthcare  
workers and  
volunteers**

**Where can  
I get a vaccine if I am  
a healthcare worker?**



**Hospital** where I work or volunteer

**Long-term care facility** where I live, work or volunteer

**Points of dispensing at:**

- Pharmacies
- Urgent care centers
- Other medical clinics
- Federally Qualified Health Centers
- Hospitals
- Local Health Departments
- Other state and county-run sites

**For more information please visit [our website](#)**

# What is considered a healthcare setting?



## Hospital workers and volunteers

Hospitals of any type



## Long-term care workers, volunteers, and residents

Long-term care facilities, for example:

- Skilled nursing facilities
- Veteran's homes
- Assisted living facilities, continuing care retirement communities, and personal care homes
- HUD Supportive Housing for the Elderly Program housing
- Group homes like residential care homes, residential dementia care homes, comprehensive care homes, adult family homes, adult foster homes, and intellectual and developmental disabilities IDD group homes
- Other vulnerable, congregate, long-term settings



## All other healthcare workers and volunteers

Other settings or contexts, for example:

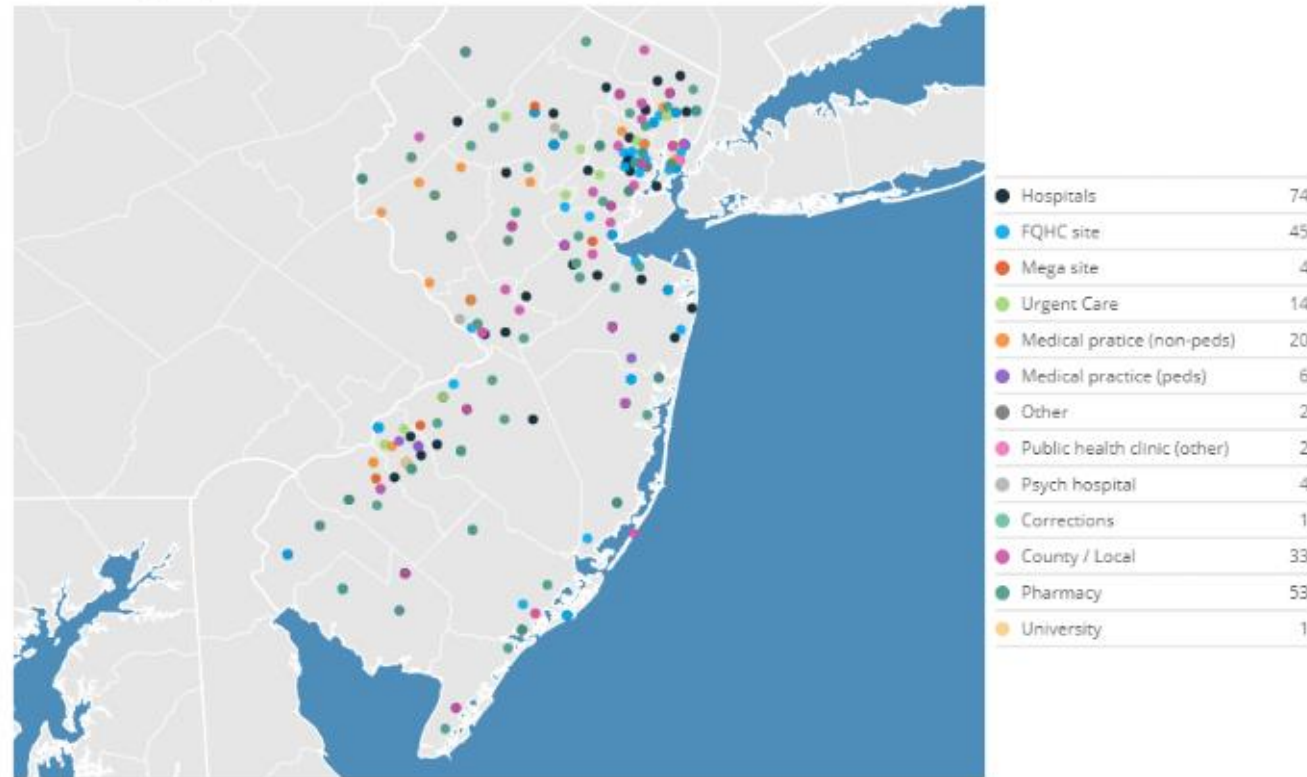
- Ambulatory care facilities
- Community health centers
- Dental and other physician offices
- Dialysis centers
- Emergency Medical Services
- Family planning centers
- Federally Qualified Health Centers (FQHCs)
- Funeral homes, cemeteries, crematoria
- Harm reduction centers
- Health clinics in workplaces, K-12 schools, universities, shelters, jails
- HIV/Sexually Transmitted Disease clinics
- Home care or visiting nurse agencies
- Hospice centers
- Intermediate care facilities
- Local public health departments, LINCS agencies
- Medical Marijuana Program Dispensary
- Other health settings like rehabs
- Pharmacies
- Psychiatric facilities
- School nursing and health centers
- Shelter health clinics
- Transitional living facilities
- Urgent care clinics
- **Other settings where healthcare is provided**

For more information please visit [our website](#)

**CONFIDENTIAL**

# List of vaccination sites that have been set up in NJ

PODS Facility Map



County	Facilities
Essex	25
Hudson	21
Camden	18
Mercer	17
Middlesex	17
Bergen	16
Morris	15
Monmouth	15
Burlington	14
Atlantic	13
Ocean	13
Hunterdon	11
Passaic	11
Union	10
Somerset	9
Cumberland	8
Gloucester	8
Warren	6
Salem	4
Cape May	4
Sussex	4

There are **~250 sites**, of which 150+ are “open” currently to health care workers and other eligible populations

# Topics for discussion



**Who** can get vaccinated  
**when** (estimated) in NJ?



**Where** can you get  
vaccinated in NJ?

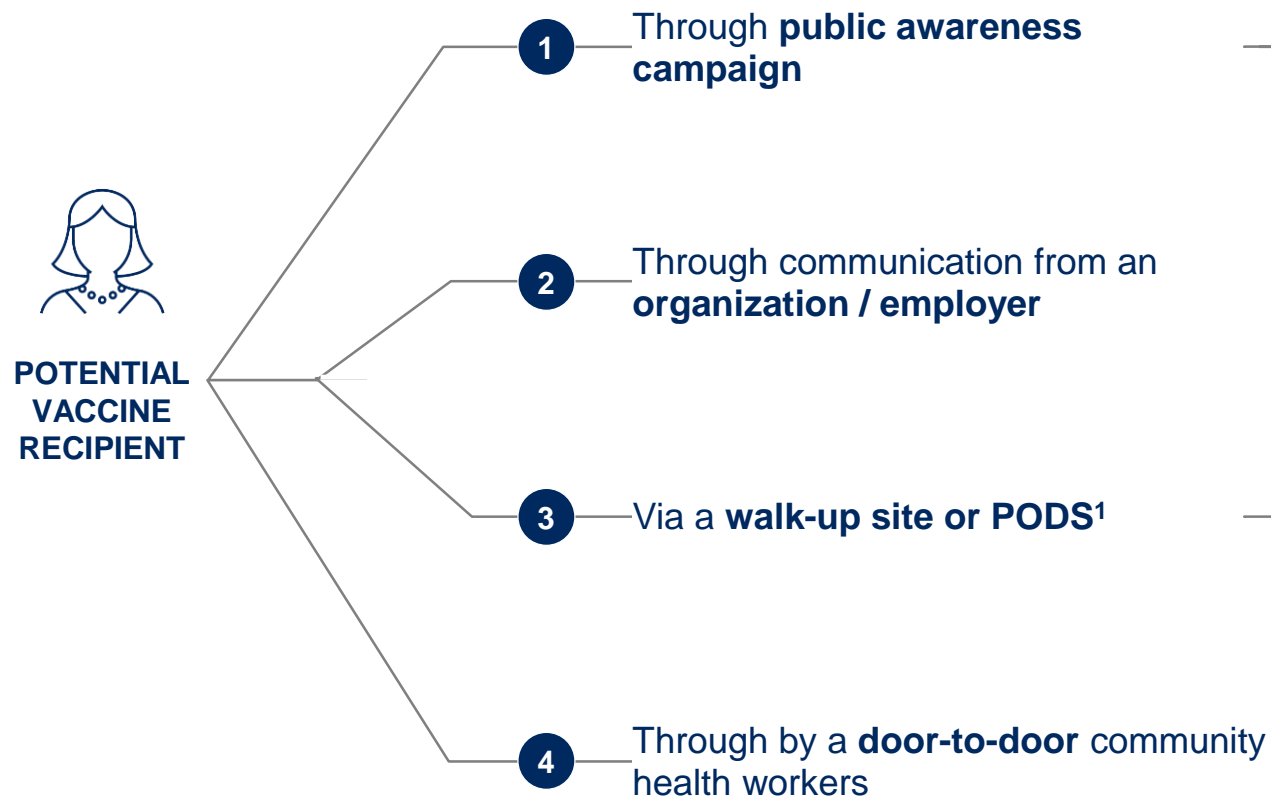


**How** can you get  
vaccinated?



# The State is supporting multiple pathways to ensure consumers are able to register for vaccines

## How consumers are reached



## How consumers register

### Self-registers on:



**Website**



**Call center**



**Walk-up sites**



**PODS<sup>1</sup>**



**Door-to-door vaccine community health workers**

<sup>1</sup> PODS: Point Of Dispensing Sites

# Vaccine recipient journey at a standard COVID-19 vaccination site

## Registration and education



- **Vaccine recipient** registers via state website, call center, walk-up site or door-to-door program
- **Vaccine recipient** schedules appointment or walks in (including scheduling second dose)
- **NJHS** provides link to education on the COVID-19 vaccine in multiple languages
- **DOH-developed registration platform(s)** conducts eligibility screening (medical and prioritization)

## Check-in and consent



- **Registration staff** checks in recipient and inputs consumer related data
- **Registration staff / patient navigator** provides education on the COVID-19 EUA factsheet (in multiple languages) again
- **Vaccine recipient** fills in “postcard” reminder (TBD)
- **Vaccinator / medical screener** conducts medical screening as required

## Vaccination



- **Vaccinator** prepares vaccine doses
- **Vaccinator** administers vaccine
- **Vaccinator** inputs vaccine related data

## Observation and Follow-up



- **Vaccinator** observes for 15 minutes post administration



- **Observation staff** hands consumer COVID vaccination record card
- **Observation staff** provides safety information and details for adverse event reporting and scheduling second dose appointment
- **DOH-developed registration platform(s)** sends second dose reminder (e.g., call back from call center, reminder from state online registration system)

**CONFIDENTIAL**

# COVID-19 vaccinations are available free of cost to the vaccine recipient

## Vaccine costs

## Administration costs

### Consumers

- Free of charge

- Free of charge

### Providers

- Free of charge from federal government<sup>1</sup>

- Reimbursement of \$16.90 for first dose and \$28.40 for second dose expected
- Insured persons: To be billed to private insurer, Medicaid, Medicare, etc.
- Uninsured persons: To be reimbursed through the federal uninsured fund managed by Health Resources and Services Administration (HRSA), which has already been covering the cost of care for uninsured COVID-19 patients<sup>1</sup>

<sup>1</sup> From U.S. Department of Health and Human Services Answers to National Governors Association Questions on Vaccine Distribution and Planning  
Preliminary, pre-decisional, and deliberative. Based on input provided by State agency leaders and staff, to date, and subject to change. Content is descriptive only and is not meant to constitute legal, clinical, or policy advice.

# Topics for discussion




**Who** can get vaccinated  
**when** (estimated) in NJ?



**Where** can you get  
vaccinated in NJ?



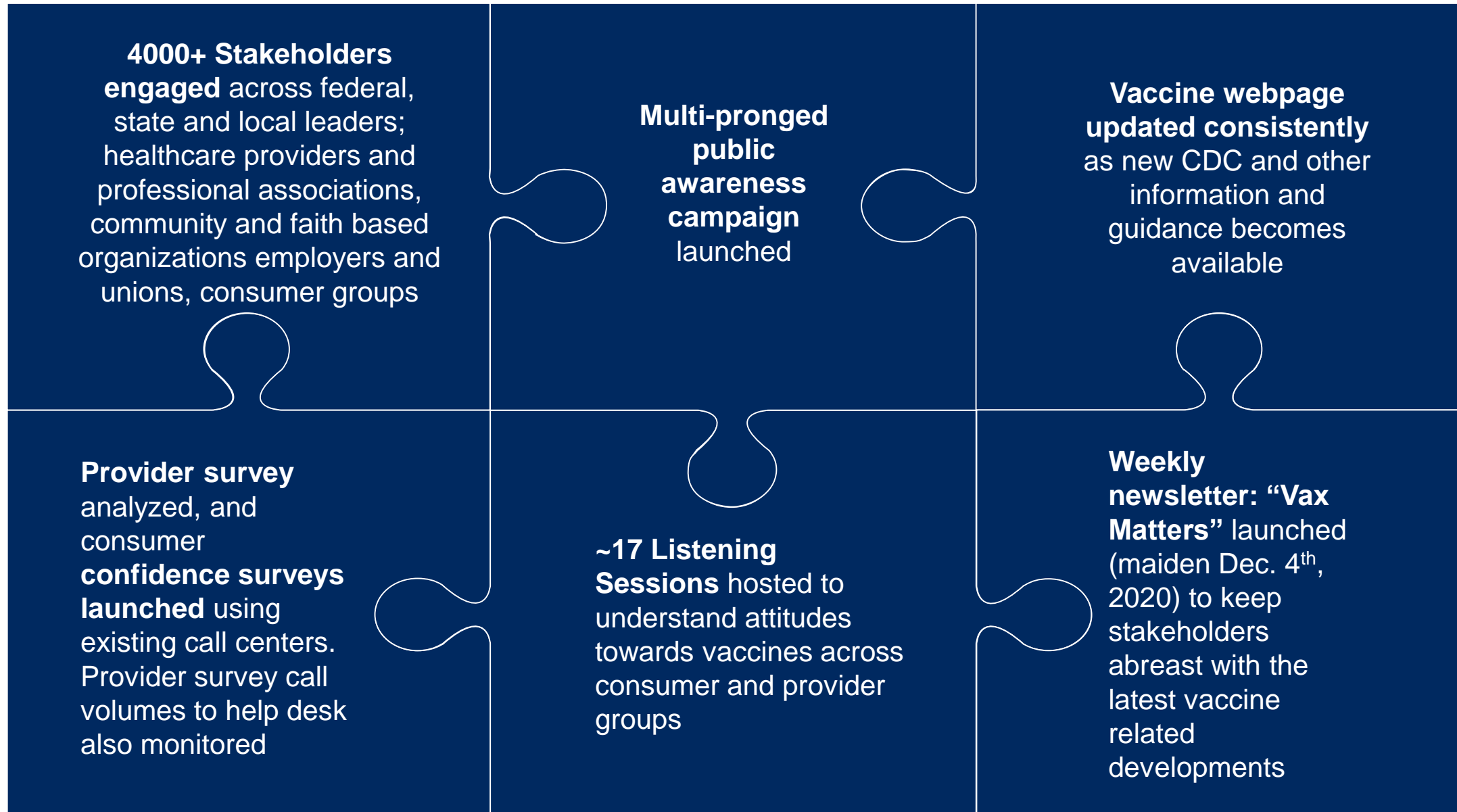
**How** can you get  
vaccinated?



Stakeholder and public engagement

**CONFIDENTIAL**

# For vaccination uptake, building public confidence is key



**CONFIDENTIAL**

# Weekly newsletter - [link](#)

## Vax Matters

**NJ Health**  
New Jersey Department of Health

January 8, 2021

### News

#### Commissioner Builds On Vaccine Outreach

New Jersey Department of Health (NJDOH) Commissioner Judith Persichilli has continued to engage with stakeholders weekly as part of the state's outreach efforts to help build public confidence in the vaccine and the process.

Since summer, she has engaged with over 5,470 stakeholders from 80 groups including interfaith-based organizations, pharmacies, higher education, elected officials, disabilities advocates, unions, healthcare associations, counties and local health departments, medical boards, law enforcement and first responders.

The Commissioner has provided insights on the types of vaccines, distribution process, prioritization phases, and the work of NJDOH's COVID-19 Vaccination Task Force and its review of all actions through a health equity lens.

### Resources

[Volunteer with the New Jersey Medical Reserve Corps](#)

[COVID-19 Information Hub Vaccine Page](#)

[NJDOH COVID-19 Vaccination Page](#)

[New Jersey COVID-19 Vaccination Plan](#)

[Sign up for Vax Matters](#)

### Vaccinations Begin for Sworn Law Enforcement and Fire Professionals

The state has begun opening up Phase 1B for vaccinations. First up: Sworn law enforcement and fire professionals.

Governor Murphy, NJDOH Commissioner Judith Persichilli, Attorney General Gurbir Grewal and Superintendent of the State Police Colonel Patrick Callahan marked the start of these vaccinations in a Friday visit to the Morris County Regional Vaccination Center in Rockaway, one of six state-supported megasites opening over the next weeks.

"We're all used to charging head-on into potentially dangerous situations, but COVID-19 has added a whole new layer of uncertainty and change for all of us," said John "Jay" Alderton, a career firefighter and EMT with the Morris Township Fire Department who was vaccinated. "This vaccine is the first step of us moving in the right direction."

As of midday Friday, there have been 175,157 vaccinations statewide, including first and second doses.

All sworn law enforcement and fire professionals in New Jersey are now eligible to receive the COVID-19 vaccine, which is estimated to include about 55,000 individuals. They are the first individuals in Phase 1B to become eligible for vaccination. EMS professionals, also considered first responders, are already eligible for the vaccine under Phase 1A as healthcare workers.

Movement between phases will be very fluid and one phase will overlap with another, said NJDOH Commissioner Persichilli during a press briefing this week on the initial opening of Phase 1B.

"We will not wait for all individuals in one phase to be vaccinated before opening up to additional groups," she said.

Individuals in Phase 1A will continue to be eligible and those in high risk and congregate care settings will remain a priority. NJDOH will continue to update the public on the progress of the phases so residents will know when vaccines will be available to them.

**Six megasites slated to open**

The megasites are part of a network of [community-based sites](#) to provide vaccinations initially to healthcare workers in Phase 1A, along with sworn law enforcement and fire professionals.

A megasite at Rowan College of South Jersey in Sewell also opened Friday. The remaining sites include: Atlantic City Convention Center; Racetrack at Meadowlands, East Rutherford; Moorestown Mall; and the New Jersey Convention and Exposition Center, Edison.

*(See Megasite, continued on Page 2)*

### Phase 1B to Pre-Register For Vaccines

through the phased-vaccination process, we schedule additional targeted groups and members of the public," said Commissioner Persichilli.

includes healthcare workers, who are paid and are serving in healthcare settings who have the direct or indirect exposure to patients or infectious. Phase 1A also includes residents and staff care facilities under the federal pharmacy part-CVS and Walgreens.

eligible and registered will be notified via email an appointment. Registrants in later phases will be notified to schedule an appointment when eligible for vaccination.

### University Hospital Emergency Department Nurse Maritza Beniquez, the first healthcare worker in the state to be vaccinated, received her second dose of the COVID-19 vaccine this week joined by Governor Murphy and Health Commissioner Judith Persichilli.

*(Pool photo: Amy Newman/The Record)*

Please use link to subscribe for Vax Matters newsletter!

**CONFIDENTIAL**

# What do we need from you?



Seek knowledge and be informed



Reach out if you have questions



Participate in setting up vaccination sites



Work with us to build public confidence



Engage with your members



Stay safe, stay healthy, ...

**CONFIDENTIAL**



...and get vaccinated!

# Next steps – *to discuss*