

The background of the slide is a detailed illustration of COVID-19 virus particles. These particles are depicted as spherical, greyish-blue structures covered in numerous orange, spike-like protrusions. They are scattered across the frame, with some appearing in sharp focus in the foreground and others blurred in the background, creating a sense of depth. The overall color palette is dominated by soft pinks, reds, and oranges, giving the slide a clinical yet somewhat somber aesthetic.

COVID-19 Update

Meg Fisher, MD
May 10, 2022

Disclaimer

Information about COVID-19 and SARS-CoV-2, the virus that causes the illness is evolving daily

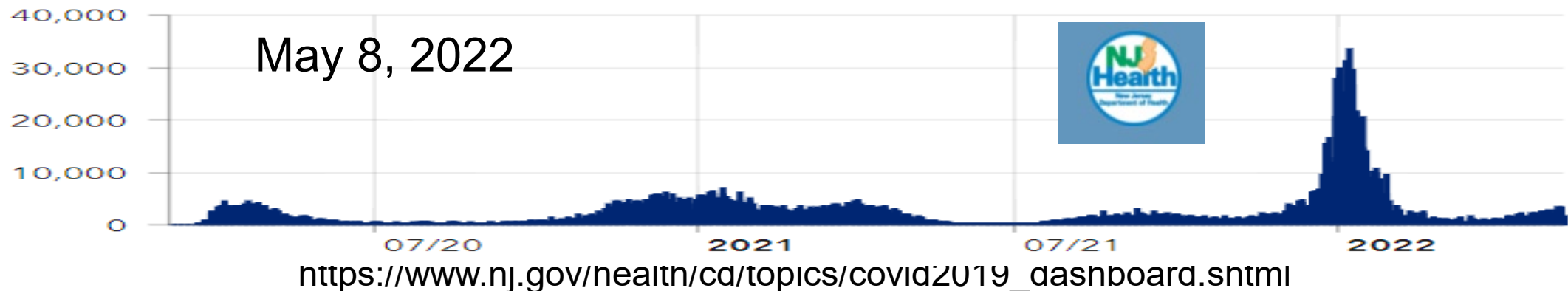
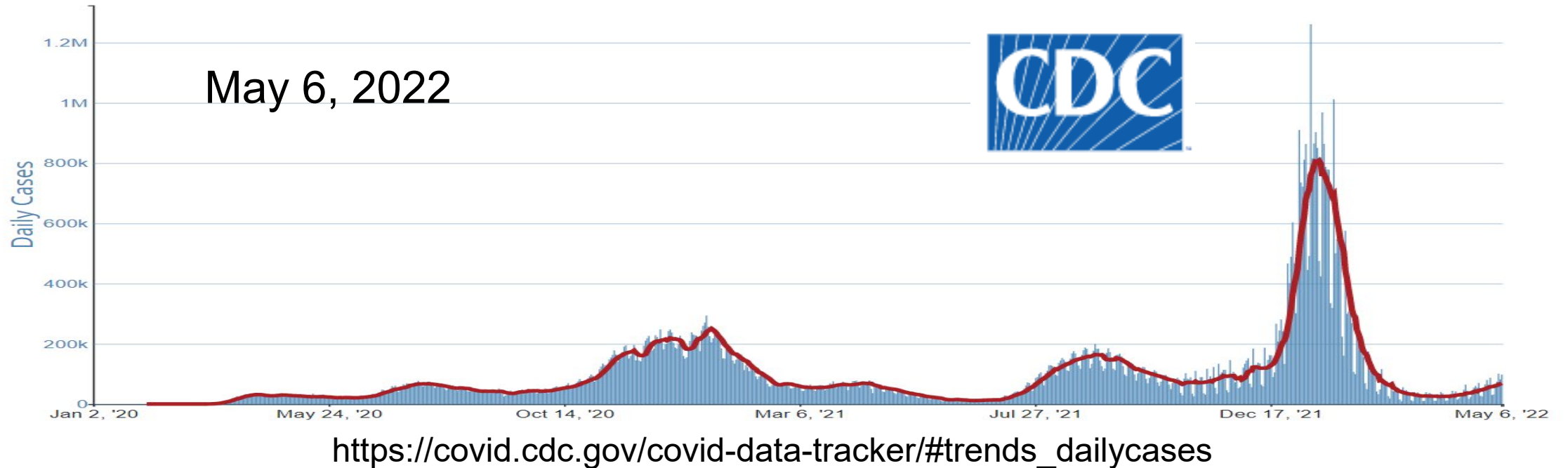
Recommendations change frequently

What you hear today may be outdated soon

Trusted sources of up-to-date information

- NJ Department of Health - www.nj.gov/health/
- Centers for Disease Control and Prevention - www.cdc.gov
- American Academy of Pediatrics – njaap.org/, www.aap.org and www.healthychildren.org

COVID-19 Cases in the US and in NJ



COVID-19 Basics

- Disease varies from asymptomatic to mild upper respiratory illness to pneumonia to multiorgan involvement and death – to date, 995,023 deaths in US and 33,495 in NJ
- Disease in children usually either asymptomatic or mild but not always, 1527 deaths in US, 17 in NJ
 - Multisystem inflammatory syndrome – Children (MIS-C) is a rare post-infectious complication – as of March 28, 2022 – 8,210 cases, 68 deaths reported to CDC; as of May 9, 2022 - 195 in NJ, 1 death



<https://coronavirus.jhu.edu/map.html>; https://covid.cdc.gov/covid-data-tracker/#trends_dailydeaths;

https://www.nj.gov/health/cd/topics/covid2019_dashboard.shtml; <https://covid.cdc.gov/covid-data-tracker/#pediatric-dat>

Preliminary, pre-decisional, and deliberative. Based on input provided by State agency leaders and staff, to date, and subject to change. Content is descriptive only and is not meant to constitute legal, clinical, or policy advice.

Post-COVID Conditions

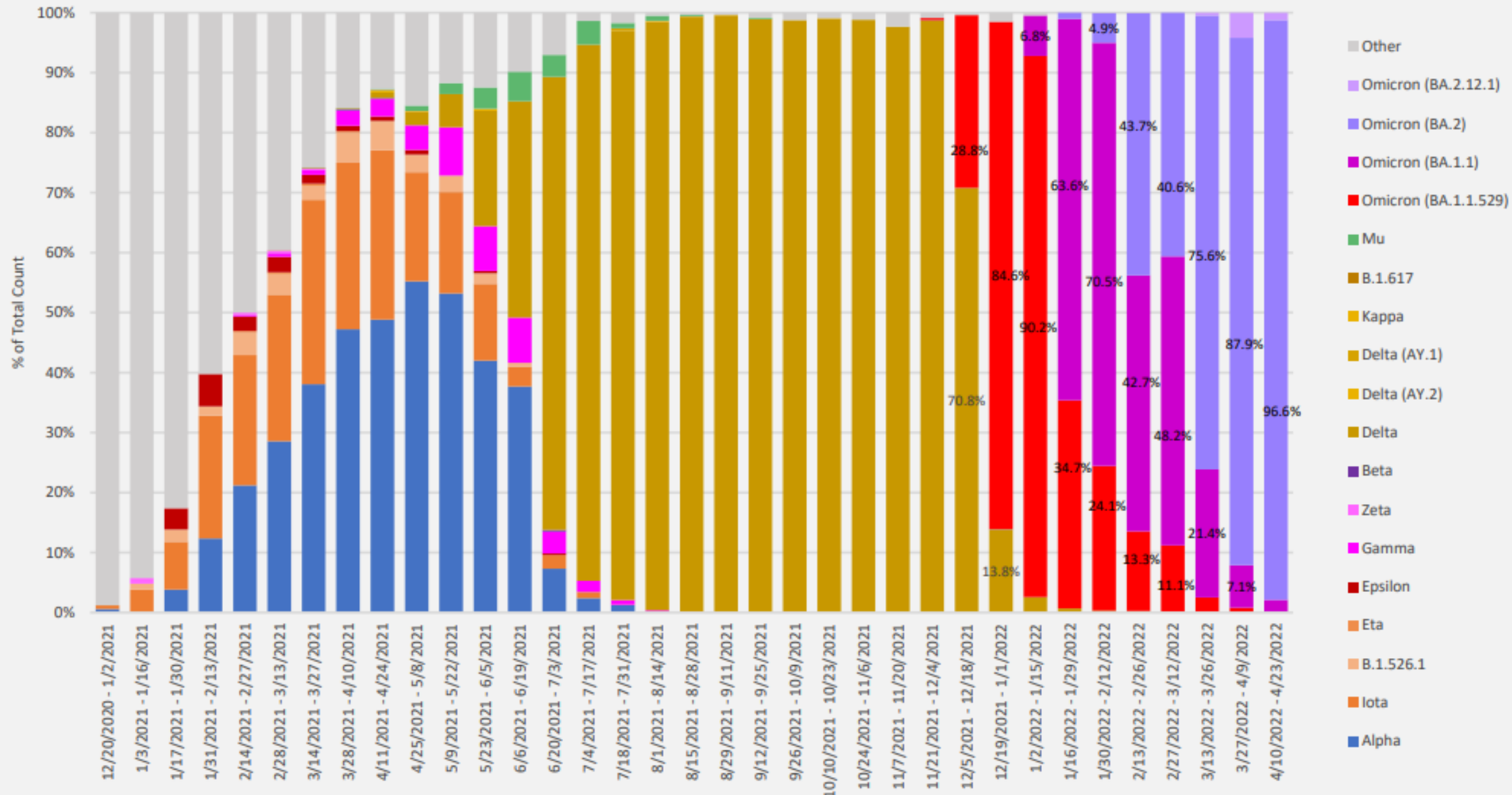
Long COVID, long-haul COVID, post-acute COVID

| | | |
|--------------------------|---------------------|------------------------|
| Breathing difficulty | Tired or fatigued | Worse after activity |
| “Brain fog” | Cough | Pain: chest or stomach |
| Headache | Palpitations | Joint or muscle pain |
| Pins-and-needles feeling | Diarrhea | Sleep problems |
| Fever | Dizzy on standing | Rash |
| Mood changes | Smell/taste changes | Menstrual changes |

Incidence 5 to 50%

<https://www.cdc.gov/coronavirus/2019-ncov/long-term-effects.html>

COVID-19 Variant Surveillance by Specimen Collected Week- Cumulative Summary





covid19.nj.gov/vaccine

COVID-19 vaccines are



SAFE EFFECTIVE FREE
for all



You can get a
vaccine if you are
**uninsured, and/or
undocumented**

COVID-19 Vaccines

- Children ages 5 to 11 Primary Series
 - Pfizer only, 2 doses, 3 weeks apart
 - Lower dose for ages 5-11
- Children ages 12 to 17 Primary Series
 - Pfizer only 2 doses, 3-8 weeks apart
 - Longer interval especially for males ages 12 to 39
- Adult Primary Series
 - Pfizer, 2 doses, 3-8 weeks apart
 - Moderna, 2 doses, 4-8 weeks apart
 - J&J, 1 dose
 - Pfizer or Moderna preferred



COVID-19 Vaccines

- Recommendations for immunocompromised
 - Pfizer or Moderna
 - Third dose, same dose as primary series, at least 1 month later
 - Booster dose at least 3 months later
 - J&J, Janssen
 - Second dose, at least 1 month later
 - Pfizer or Moderna
 - Booster dose, at least 2 months later
 - Pfizer or Moderna preferred



COVID-19 Vaccines

- Booster Doses for all 12 years and older
 - Pfizer, 5 months after second dose, same dose
 - Moderna, 5 months after second dose, half dose
 - J&J, 2 months, same dose
 - Mixing and matching allowed for all
 - Pfizer and Moderna preferred in most situations



COVID-19 Vaccines

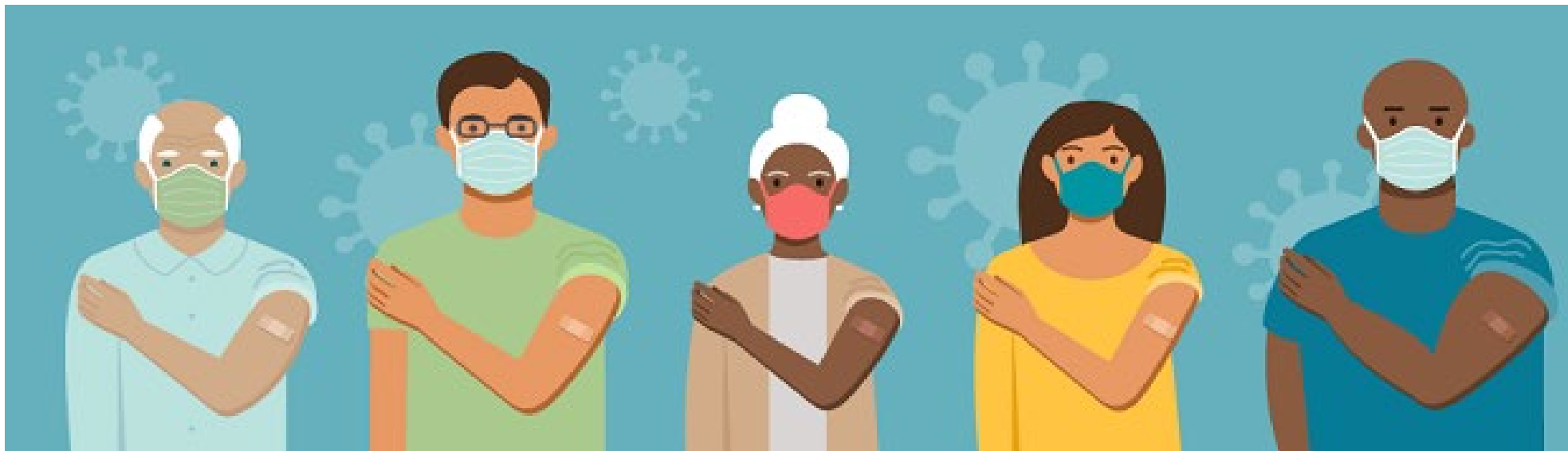
- Additional Boosters for Certain Individuals
 - People over 50 years of age are eligible
 - Immunocompromised and over age 12 years
 - Prior receipt of 2 doses of J&J
- Vaccines
 - Pfizer, 4 months after first booster, same dose
 - Moderna, 4 months after first booster, half dose
 - J&J, 4 months after, mRNA vaccine



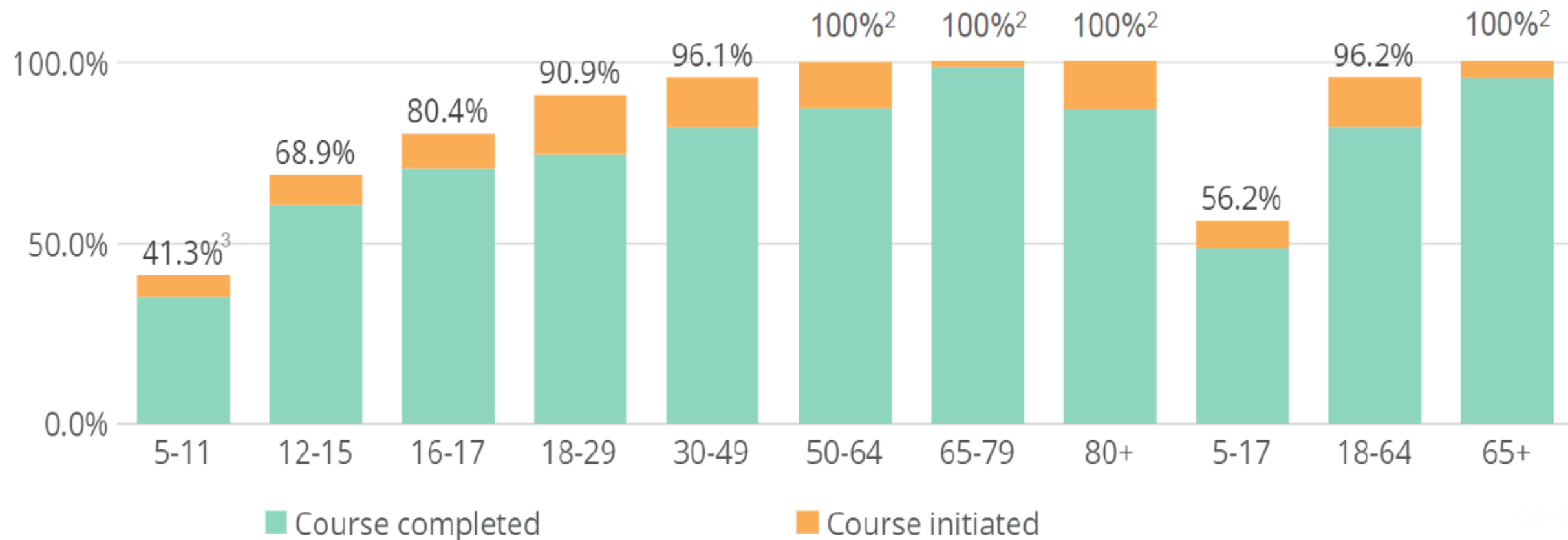
<https://www.cdc.gov/media/releases/2022/s0328-covid-19-boosters.html>

Confidential, preliminary, pre-decisional, and deliberative. Content is descriptive only and is not meant to constitute legal, clinical, or policy advice.

Protect Yourself and your families: Get a booster dose!



Primary vaccine courses (NJ & non-NJ residents vaccinated in NJ) by age category, % of total population



1st booster doses by age category, % of eligible population¹

N/A

26.7%

36.0%

42.0%

47.9%

59.1%

73.0%

73.7%

N/A

50.7%

73.2%



Transmission

How to help prevent the spread



**Get
vaccinated**



Wear a mask



**Stay 6 feet
away from
others**



**Avoid poorly
ventilated
spaces and
crowds**



**Test to
prevent
spread to
others**



**Wash your
hands often**



**Cover coughs
and sneezes**



**Clean and
disinfect**



**Monitor your
health daily**



**Follow
quarantine
guidelines**



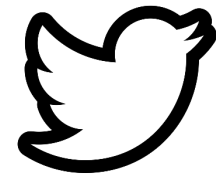
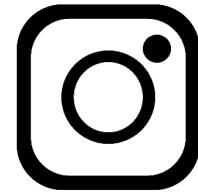
**Follow
isolation
guidelines**



**Take
precautions
when you
travel**

Help us spread the word!

The COVID-19 vaccine is
safe, effective, and free
for all



@NJDeptofHealth

#VaccinesWork

#LetsGetNJVaccinated



Thank you